



FRONT / BACK ENTRY

In most fast houses an entry is only a door. While doors provide security and weather protection, an entry is much more than just a physical boundary between inside and out. A front entry is a space of transition. It is where we greet our guests, take their coats, and introduce them to the rest of the house. Like other rooms, the design of the front entry should be appropriate and in proportion to the rest of the house. But every home, no matter how small or what type, needs a good front entry. It is the handshake of the house.

The back entry is typically one of the most utilized spaces in a home. While the front entrance primarily serves guests, the back entry is where the daily business of coming to and from home really occurs. Like the front, the back entry is also a space and not just a door. However the focus of this space is very utilitarian. It is a staging area for groceries, school backpacks, sports equipment, and whatever else you might use in day to day life. Like the loading dock of a commercial building the back entry of your home should accommodate both temporary storage needs as well as long term storage without compromising the flow of daily traffic. At the same time it should be able to easily accommodate several people simultaneously. One of the hallmarks of an inadequately designed back entry is a lineup of people in the garage waiting for space to clear in the back entry.

Front / Back Entry

Slow Home: Rules of Thumb



LIVABILITY

- The front entry does not open directly into a principal living space.
- The front entry has a sufficiently sized closet within close proximity.
- The back entry does not enter directly into a principal living space.
- The back entry has sufficient floor / storage area unobstructed with other uses such as laundry.

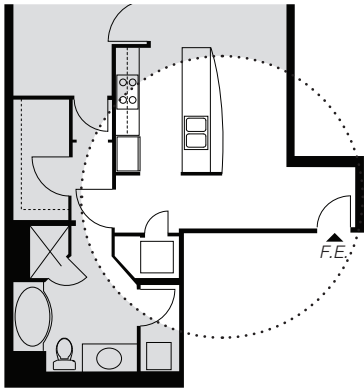
ENVIRONMENTAL FOOTPRINT

- The front entry is appropriately scaled to the size of the house.
- The front entry does not limit access to natural light into the principal rooms.
- The back entry is appropriately scaled to the size of the house.
- In a cold climate, the front entry provides weather separation.

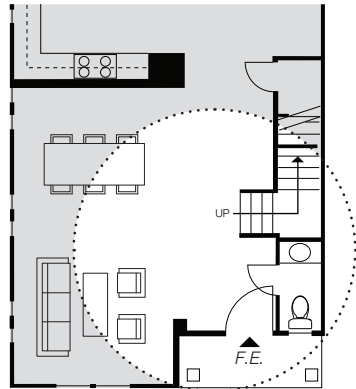
Front/Back Entry:

WHERE HAVE ALL THE CLOSETS GONE?

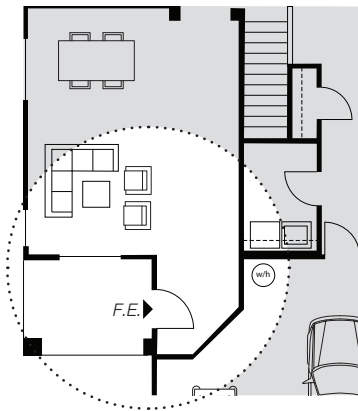
At some point in recent history the fast housing industry appears to have decided that people no longer need a place to store outside coats and boots when entering a house. Regardless of house size, type, or cost, this most basic of storage functions seems to be missing most of the time.



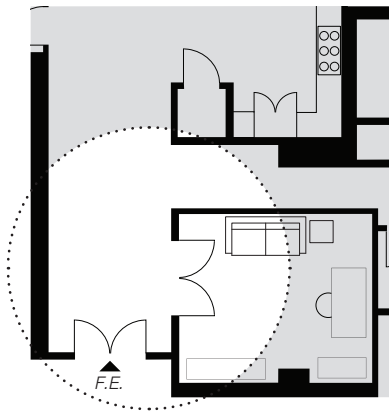
(961 sq ft condominium, New Mexico)



(2255 sq ft townhouse, Virginia)



(3113 sq ft single family house, California)



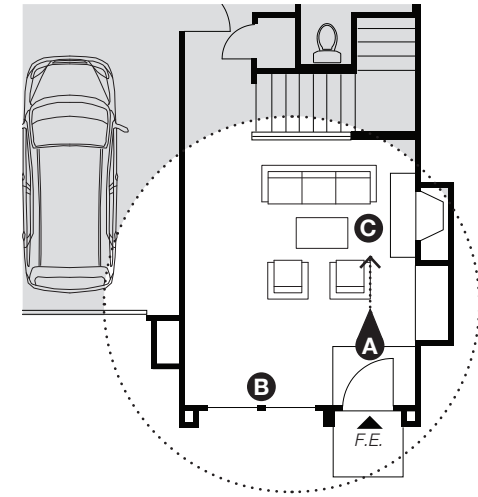
(1620 sq ft condominium, Oregon)

FAST HOUSE COMMON PITFALLS

1 Front entry is directly into a principal living room

In this house the front entry **A** is limited to a change in flooring. While this little mat of tile may keep muddy boots off the carpet it does little to create a space of transition. Notice how the door is immediately adjacent to the principal window **B** in the living room and how the view from the door is directly into the main seating area around the fireplace. **C**

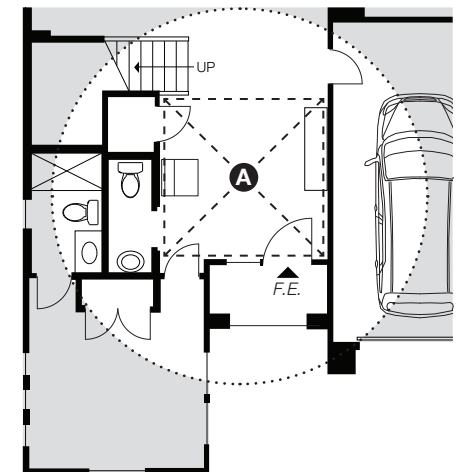
(1700 sq ft single family house, Indiana)



2 Front entry is too large and needs to be furnished

When a front entry becomes the size of a small room people feel the need to add furniture even when it is clearly unnecessary. In this particular situation, the large front entry **A** is out of proportion with a house that is only 1800 sq ft.

(1800 sq ft single family house, California)



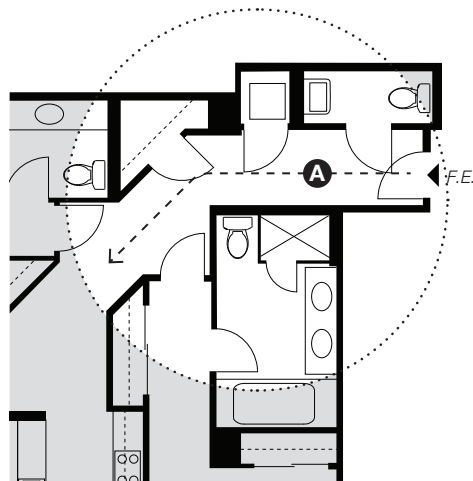
Front/Back Entry:

FAST HOUSE COMMON PITFALLS

3 Front entry is just a hallway

A typical hallway is not wide enough to be an effective front entrance and the view of a long corridor is not a very appealing first impression of the house. In this multi-family unit, the front entry space **A** is too tight for more than one person at a time to be at the door.

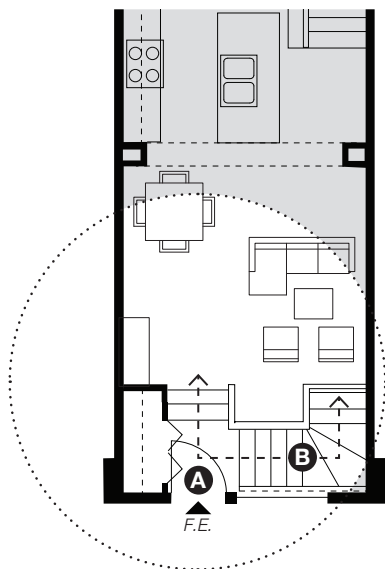
(832 sq ft condominium, California)



4 Front entry is on a stair landing

This variation of the narrow hallway entry places the front door **A** on a stair landing. The small size of the landing restricts the functionality of the entry and there is a conflict between the front door and the vertical circulation to the upper floor. **B**

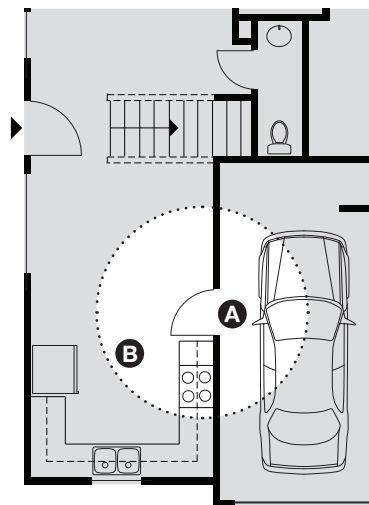
(1008 sq ft townhouse, Alberta)



5 Back entry is directly into the house

Many fast houses do not have a dedicated back entry space. In this house the door from the garage **A** opens directly into the kitchen. **B** This causes serious circulation conflicts, particularly when coats, shoes, and bags are left by the door.

(1606 sq ft townhouse, Colorado)



6 Back entry is too small to be shared with laundry

In this house the back entry is also the laundry room. **A** While this can be a good way to reduce the footprint of the house, in this case the small size and inefficient layout of the room does not allow both uses to coexist in an effective way.

(2109 sq ft single family house, New Jersey)

